

Art Moderne II

OG021

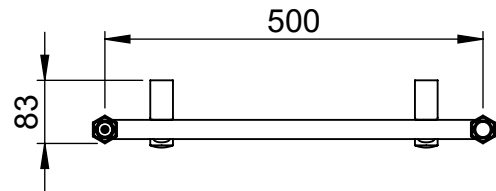
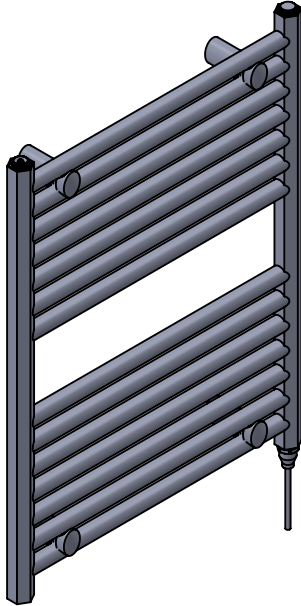
700x532

Height: 700
 Width: 532
 Depth: 83
 Weight HO: kg
 EO: kg

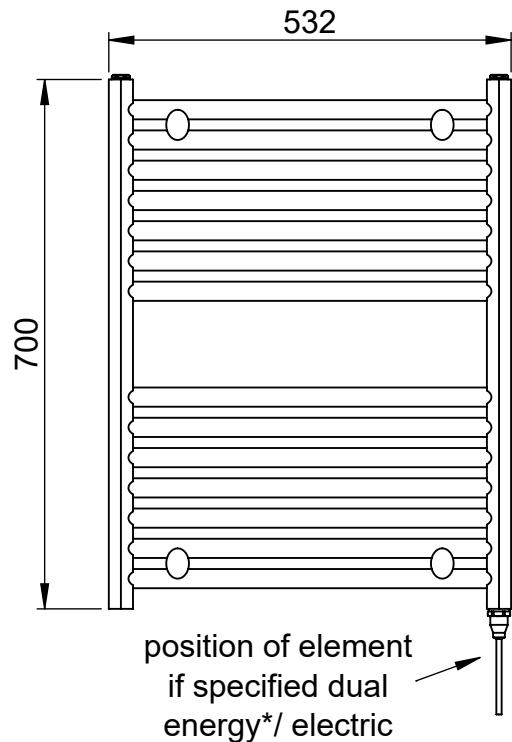
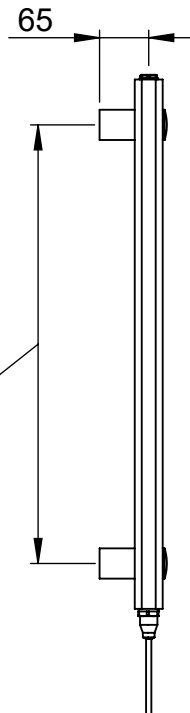
Tube ϕ : 32 Hex + 25.4
 Pipe Centres: 500
 Elec. element if specified: 125
 Output @ 50°C Δ T Watts: 354
 BTUs: 1208

All dimensions in millimetres

Manufactured from ISO/CEN CuZn36As (BS CZ126) brass tube



Brackets extendable by a further 20mm



*Dual energy models require a conversion-tee, consult relevant drawing for details.

Vogue UK Ltd. reserve the right to alter specifications without prior notice.
 ALL MEASUREMENTS ARE NOMINAL DIMENSIONS ONLY, AND ARE NOT BINDING.



SCALE 1:10



VOGUE UK
 TOWEL WARMERS & RADIATORS

Strawberry Lane, Willenhall
 West Midlands WV13 3RS
 Tel: 01902 387000 Fax: 01902 387001
 e-mail:sales@vogueuk.co.uk www.vogueuk.co.uk